

**AMSLER GRID**

**General Instructions**

1. Test one eye at a time. Cover your other eye and be sure to test using good lighting
2. If you wear glasses for reading, wear them for this test.
3. Hold the grid approximately 14 inches away
4. Keep looking directly at the center point on the grid.
5. Mark on the sheet any abnormalities such as
  - a. Holes or blank spots on the grid.
  - b. Blurred spots or distortions
  - c. Curved or pinched lines
6. Remember to keep looking at the center. Do not let your eye wander.
7. If you notice any changes, give our office a call as soon as possible.
8. Be sure to check each eye every day

2 Farm Colony Dr  
Warren PA 16365  
814-726-2303

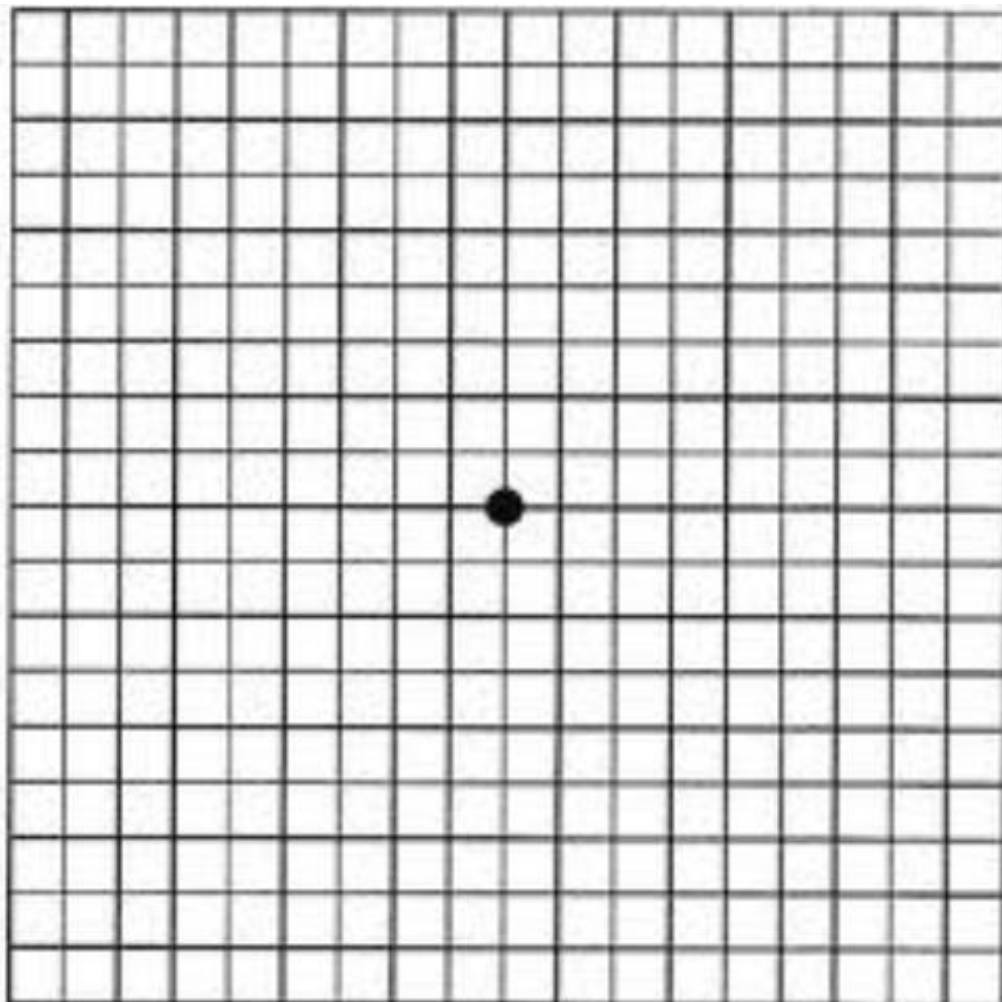
2A Park Way  
Seneca PA 16346  
814-677-6404

462 Fairmount Ave  
Jamestown NY 14701  
716-484-6700

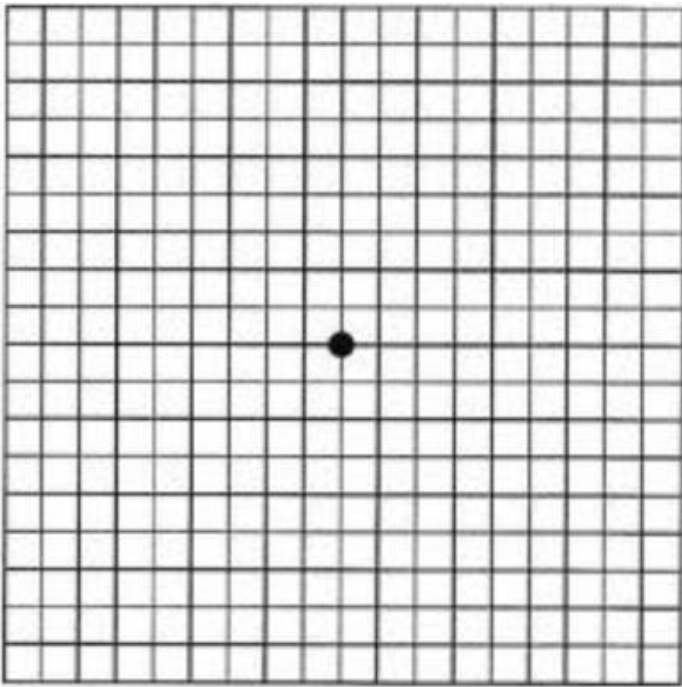
110 E Columbus Ave  
Corry PA 16407  
814-665-1300

1136 Central Ave  
Dunkirk NY 14048  
716-366-2033

2223 West State St.  
Olean, NY 14760  
716-373-0444



**Normal Vision**



**Abnormal. Consult your eye doctor immediately**

