

AMSLER GRID

General Instructions

1. Test one eye at a time. Cover your other eye and be sure to test using good lighting
2. If you wear glasses for reading, wear them for this test.
3. Hold the grid approximately 14 inches away
4. Keep looking directly at the center point on the grid.
5. Mark on the sheet any abnormalities such as
 - a. Holes or blank spots on the grid.
 - b. Blurred spots or distortions
 - c. Curved or pinched lines
6. Remember to keep looking at the center. Do not let your eye wander.
7. If you notice any changes, give our office a call as soon as possible.
8. Be sure to check each eye every day

2 Farm Colony Dr
Warren PA 16365
814-726-2303

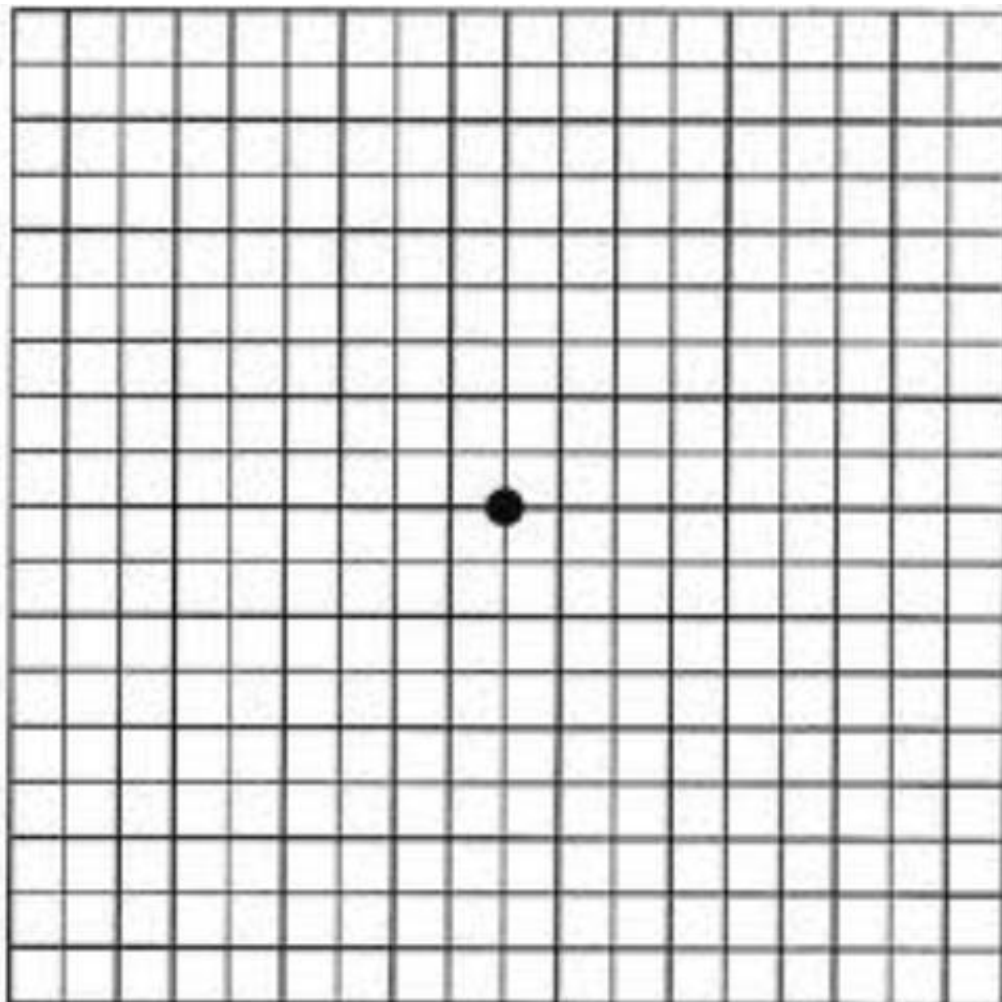
2A Park Way
Seneca PA 16346
814-677-6404

462 Fairmount Ave
Jamestown NY 14701
716-484-6700

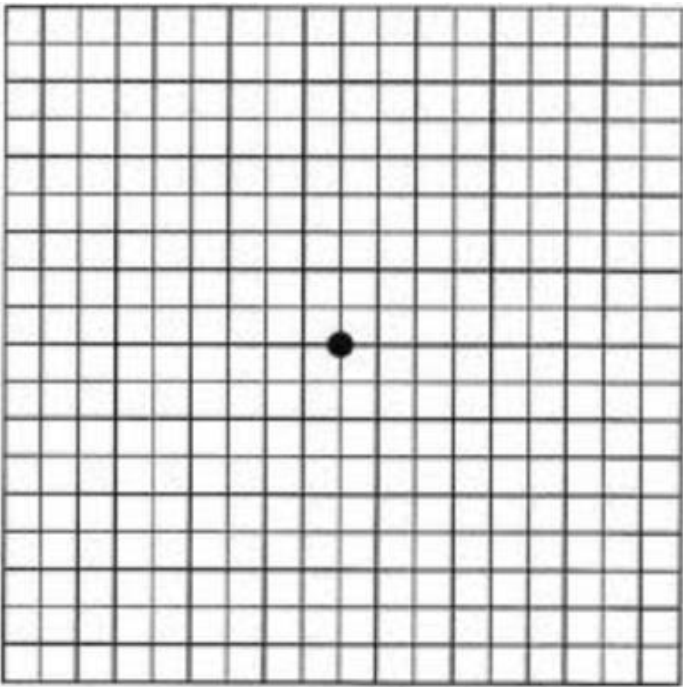
110 E Columbus Ave
Corry PA 16407
814-665-1300

1136 Central Ave
Dunkirk NY 14048
716-366-2033

314 S Franklin St
Titusville PA 16354
814-827-8819



Normal Vision



Abnormal. Consult your eye doctor immediately

